

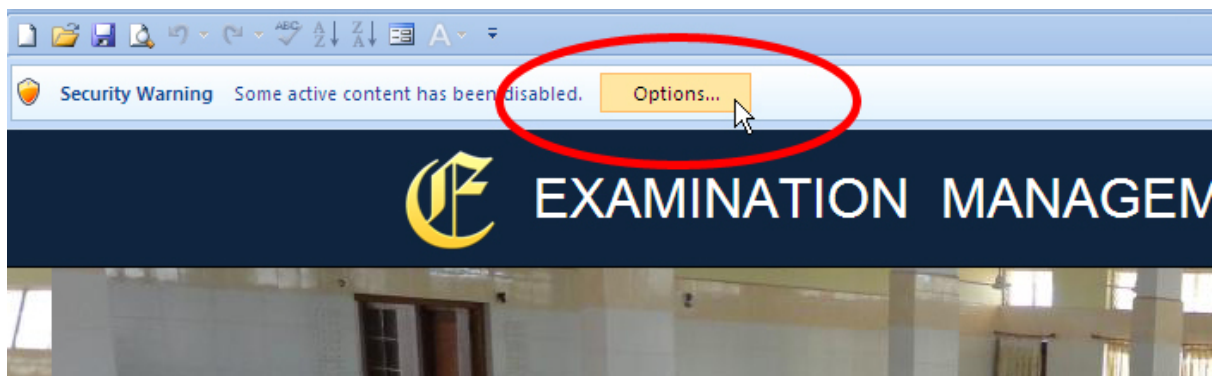
EXAMINATION MANAGEMENT SYSTEM (EMS)

[A] START WITH EMS:

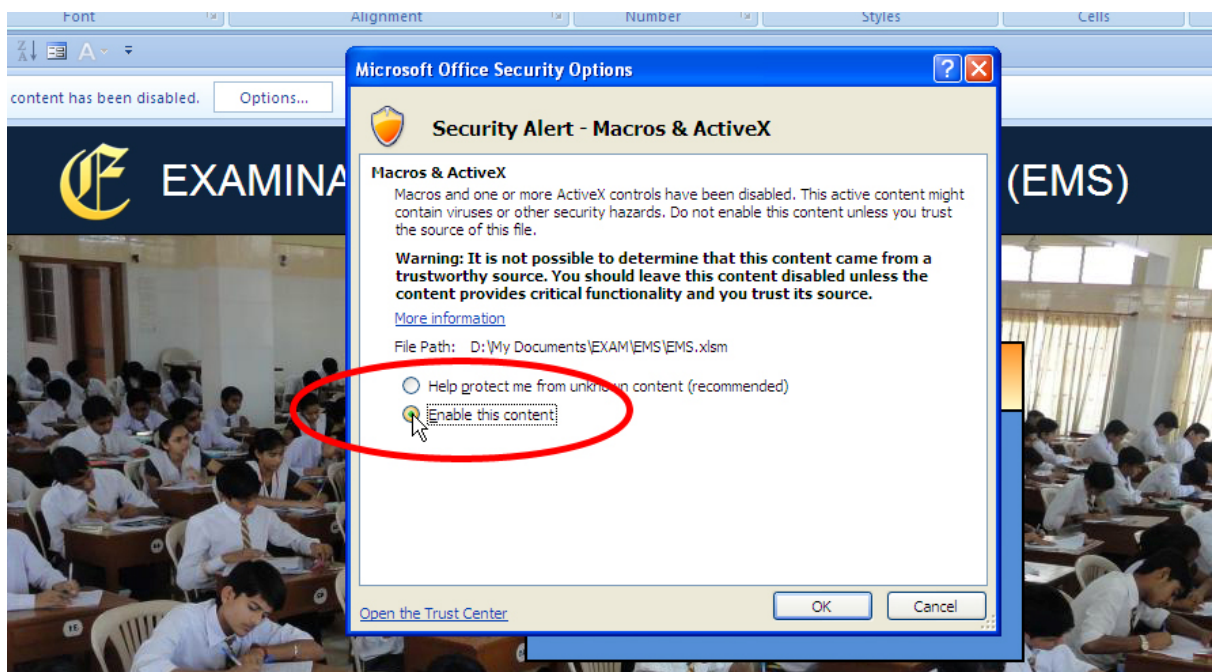
Examination Management System (EMS) is Macro Programmed Module. To make this module to work properly, you have to **ENABLE MACRO** in your Excel.

STEPS TO START ECM AND ENABLE MACRO:

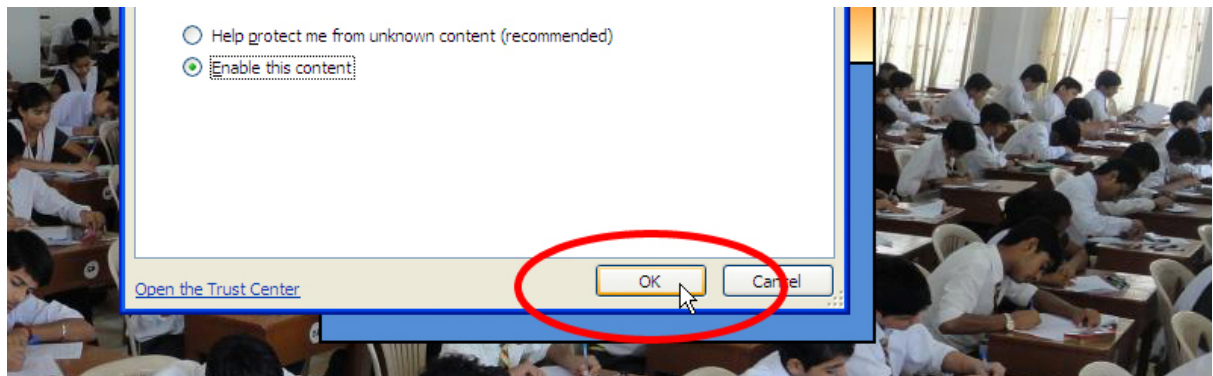
1. Double Click the EMS File to OPEN.
2. As the file opens in MS Excel, following window will appear with Security Warning. Click on the OPTIONS:



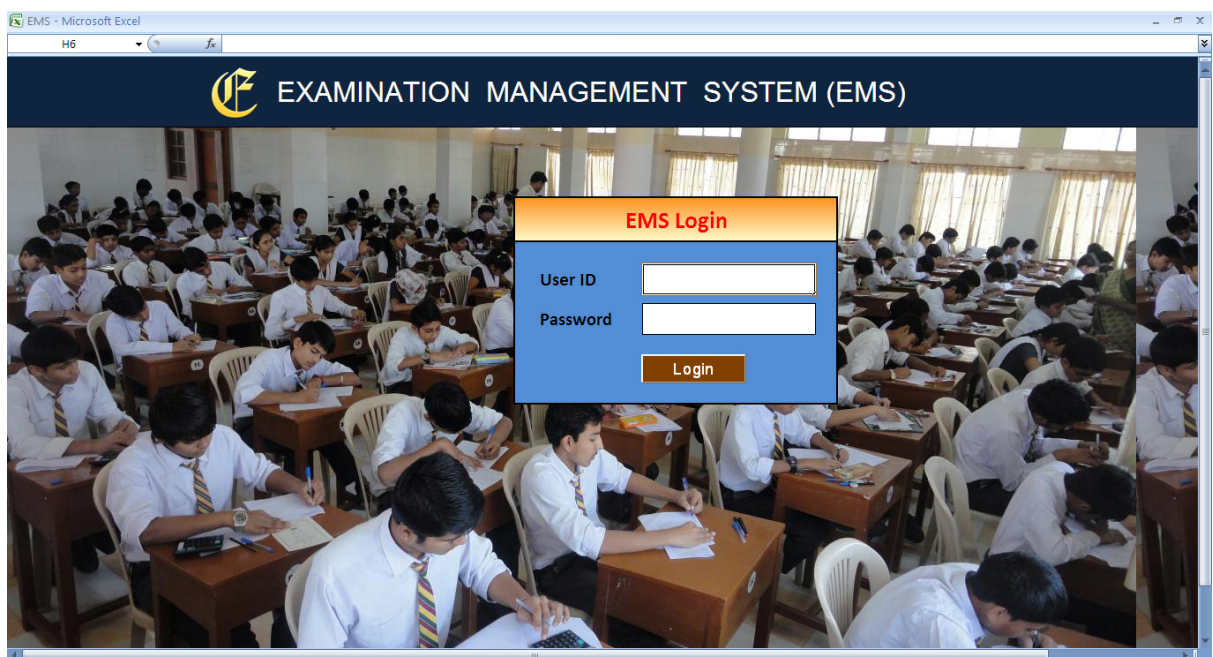
3. Now Select "Enable the Macros".



4. Now Press OK.



5. This process will Enable the Macros and the Security Warning disappears:



6. Now EMS is ready to use.

[B] LOGIN PASSWORD:

Examination Management System (EMS) is a Password protected system.

Default User ID is **abcd** and Password is **1234**.